

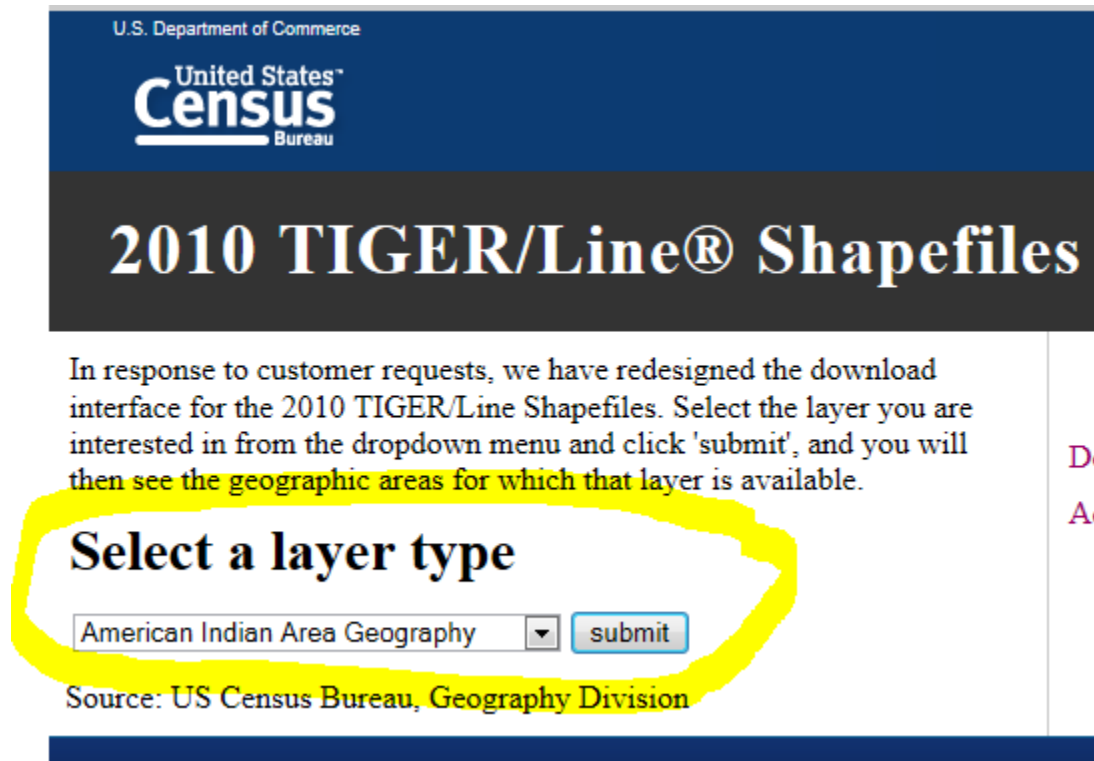
Creating 2010 Census Block Group Parcel Values With ArcMap 10.x For Tax Roll Submissions

The following step-by-step process is an aid to produce 2010 Census Block Group values corresponding to all parcels in a county parcel shapefile. This is for the purpose of populating data field 78 (Census Block Group) in a county's DOR roll submissions. While this step-by-step explanation may appear lengthy, the entire process should take less than 15 minutes to complete. The end result is a report that contains a comma delimited parcel number field and a GEOID10 field. Please note that the 2010 Census Block Group GEOID10 field is 12 characters in length.

Download the Census Block Group shapefile for your county by following this link:

<http://www.census.gov/cgi-bin/geo/shapefiles2010/main>

The initial page will look like this:



Navigate the dropdown to Block Groups and depress submit:

Select a layer type

Block Groups ▼ submit

Source: US Census Bureau, Geography Division

Creating 2010 Census Block Group Parcel Values With ArcMap 10.x For Tax Roll Submissions

Navigate the dropdown for Block Group (2010) shapefiles to Florida and depress submit:

Block Group (2010)

Florida

Block Group (2000)

--Select a state--

Select your county, depress Download. Choose Save As and direct the file to the desired destination on your hard drive:

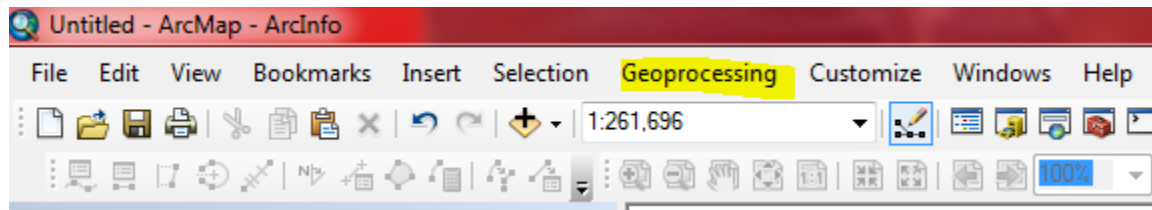
--Select a county--

Navigate to the downloaded file and unzip it (extract all).

Add the Census Block Group shapefile to an ArcMap session.

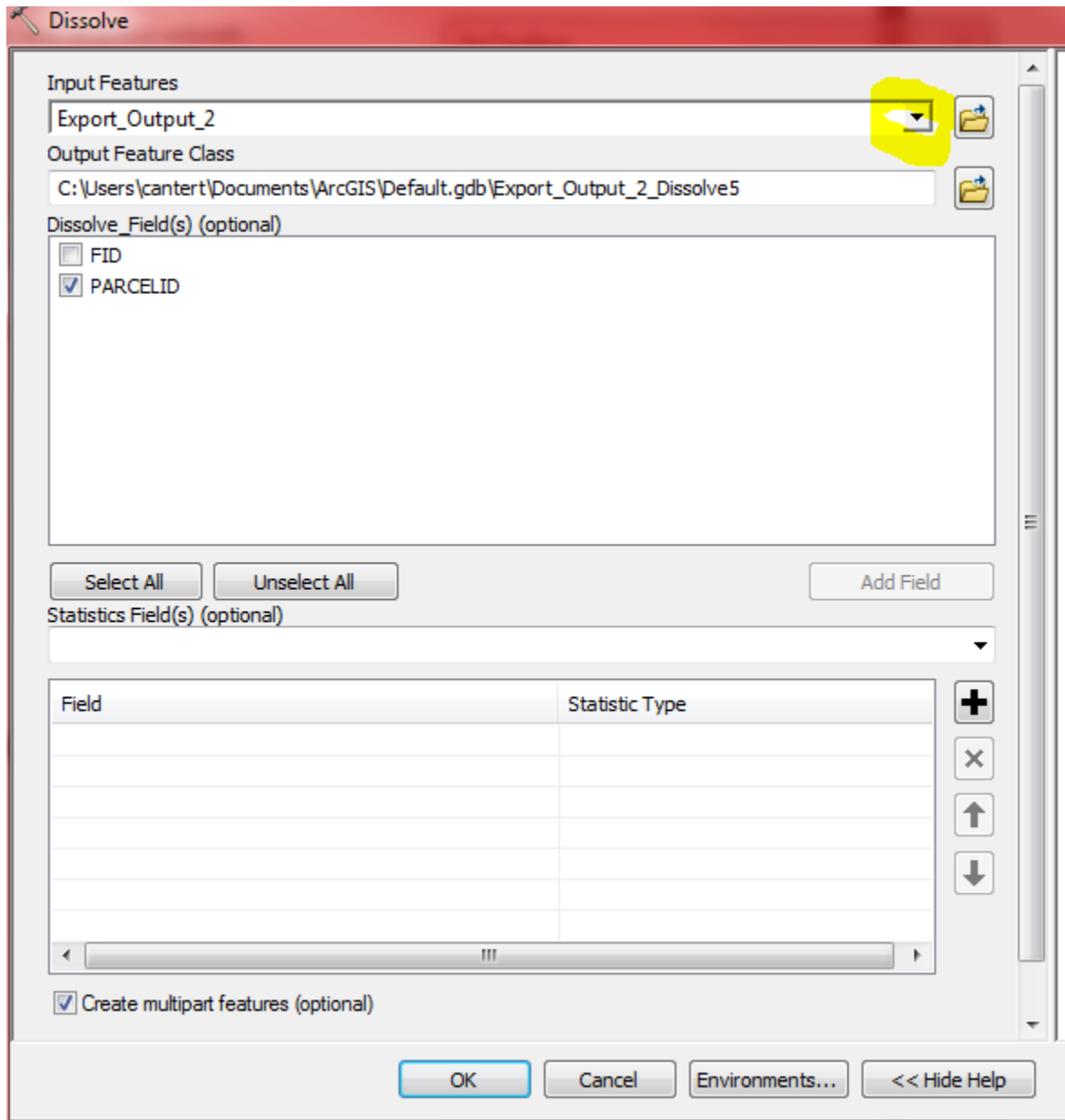
Add your current parcel shapefile to ArcMap. Performance tip: In addition to shapefile default fields, limit remaining fields to your parcel identification field.

Select Geoprocessing tools and navigate to the Dissolve tool.



Creating 2010 Census Block Group Parcel Values With ArcMap 10.x For Tax Roll Submissions

Depress the Dissolve tool to open the dissolve dialog box that will look like this:



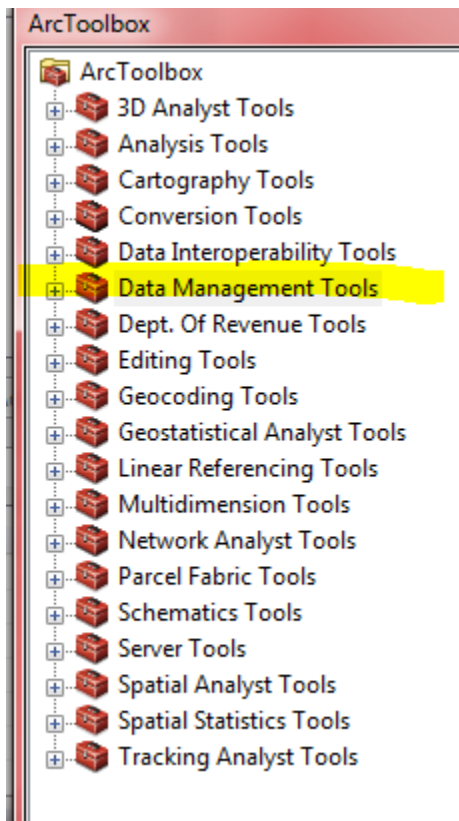
Input Features will be your current parcel shapefile so using the dropdown button, navigate to it. Dissolve_Fields will be performed on your parcel identification field, so check that. Depress OK. A status scroll will appear below the bottom of your ArcMap window. A new shapefile will be added to your Table of Contents and will have an extension of _Dissolve.

Creating 2010 Census Block Group Parcel Values With ArcMap 10.x For Tax Roll Submissions

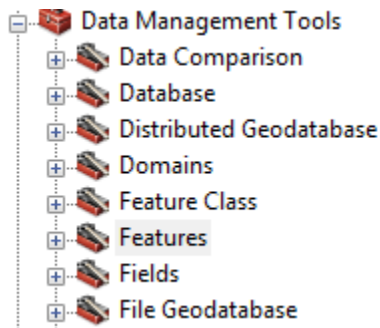
Open Arc Toolbox as shown:



Open the Data Management tools:

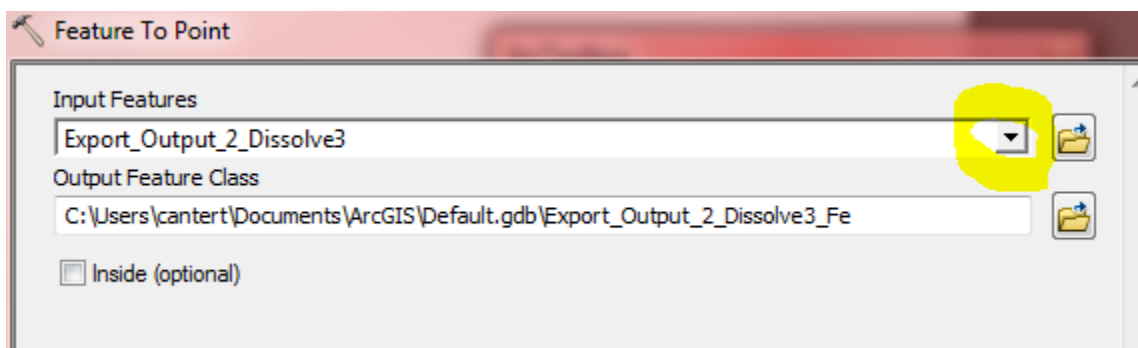
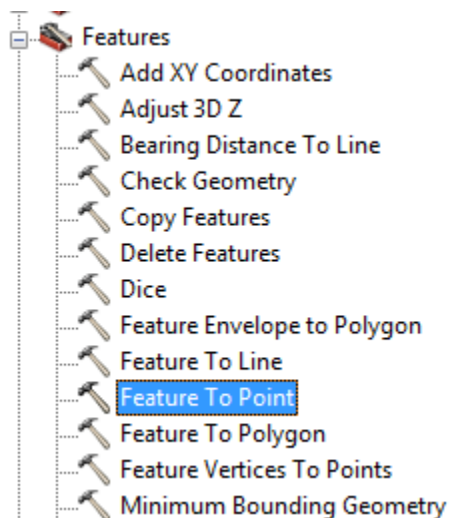


Navigate to Features and double-click:



Creating 2010 Census Block Group Parcel Values With ArcMap 10.x For Tax Roll Submissions

Now navigate to Feature to Point and double-click to access the dialog box:

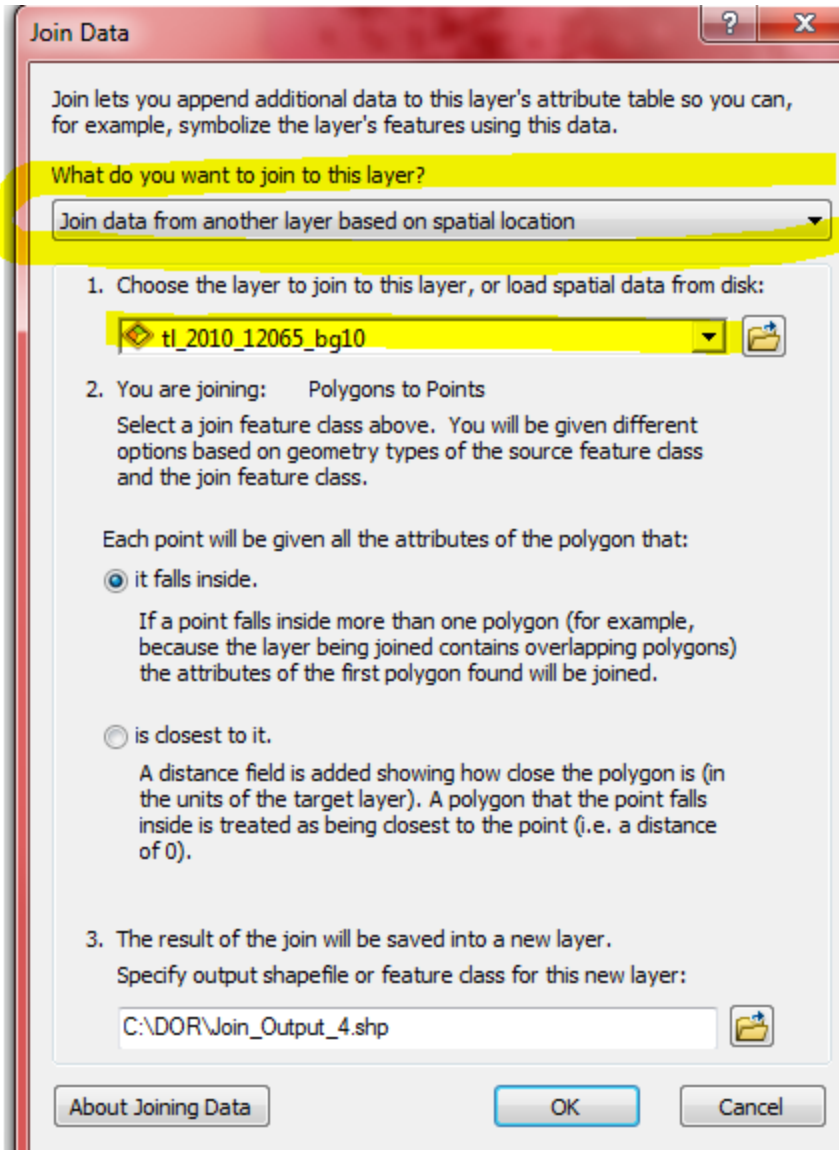


Input Features will be the Dissolve shapefile you created, so using the dropdown select it.

Another new shapefile will be added to your Table of Contents. It will have an extension of _FeatureToPoint. The file name may be shortened so don't be alarmed.

Activate the _FeatureToPoint shapefile. Right-click it and select Join and Relates and then choose Join.

Creating 2010 Census Block Group Parcel Values With ArcMap 10.x For Tax Roll Submissions



As shown, using the dropdown select “Join data from another layer based on spatial location”. At 1., using the dropdown, select the Census Block Group shapefile. Notice at 2. that “it falls inside” is selected. Depress OK.

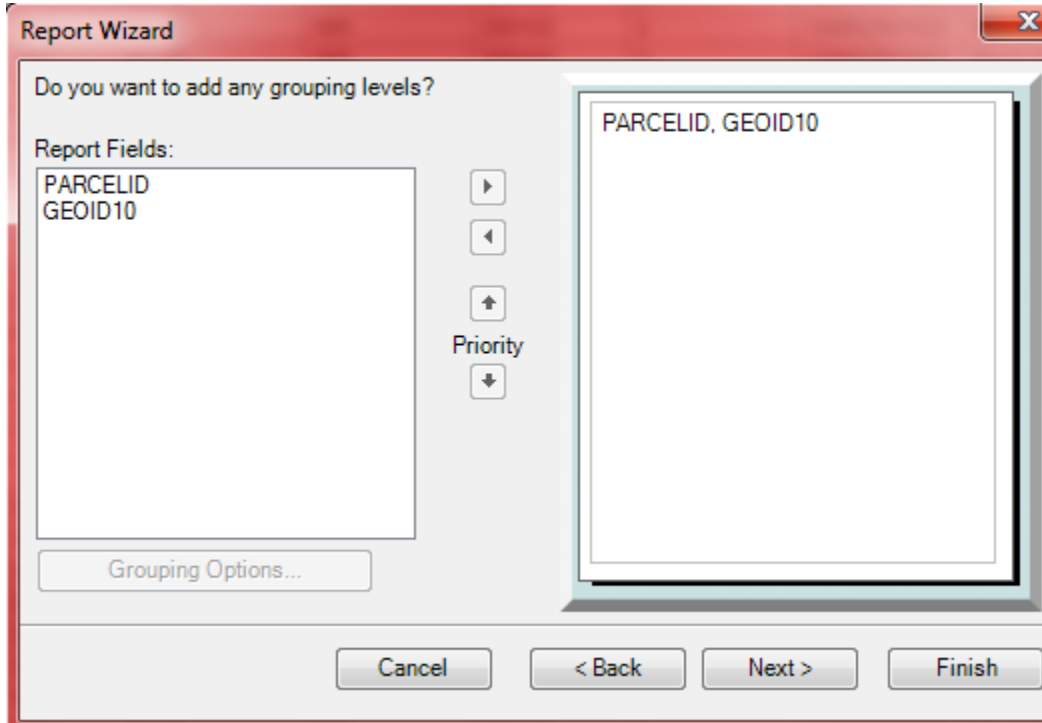
“Join_Output” will be a point file. Open the attribute table. See that GEOID10 field (highlighted) is populated. Depress the dropdown button and navigate to Reports and then to Create Report.

FID	Shape	OBJECTID	PARCELID	ORIG_FID	FID_1	STATEFP10	COUNTYFP10	TRACTCE10	BLKGRPCE10	GEOID10
0	Point	54	00-00-00-0210-0000-0060	54	0	12	065	250102	2	120652501022
1	Point	55	00-00-00-0210-0000-0061	55	0	12	065	250102	2	120652501022
2	Point	62	00-00-00-0210-0000-0390	62	0	12	065	250102	2	120652501022

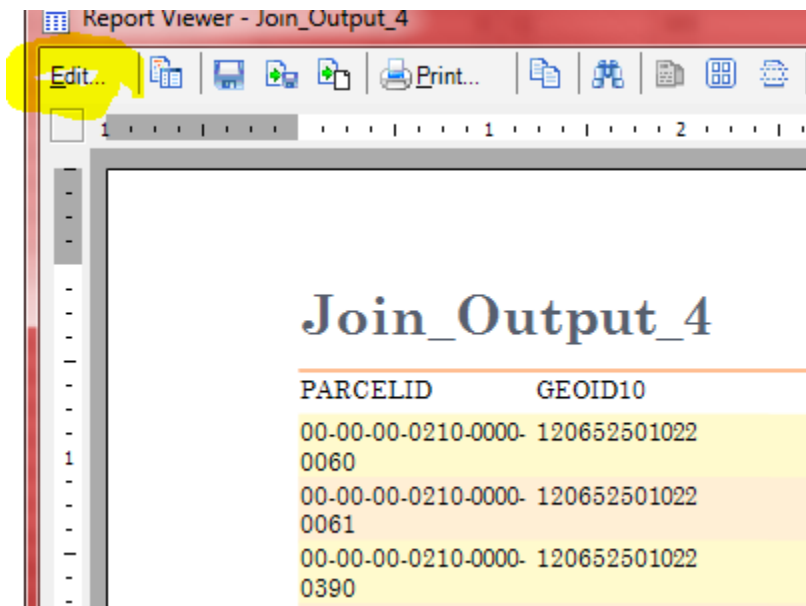
Creating 2010 Census Block Group Parcel Values With ArcMap 10.x For Tax Roll Submissions

In the Report Wizard dialog box, double-click parcel ID and also GEOID10 so they move over to Report Fields. Click Next.

Click finish at this step and let the report generate.



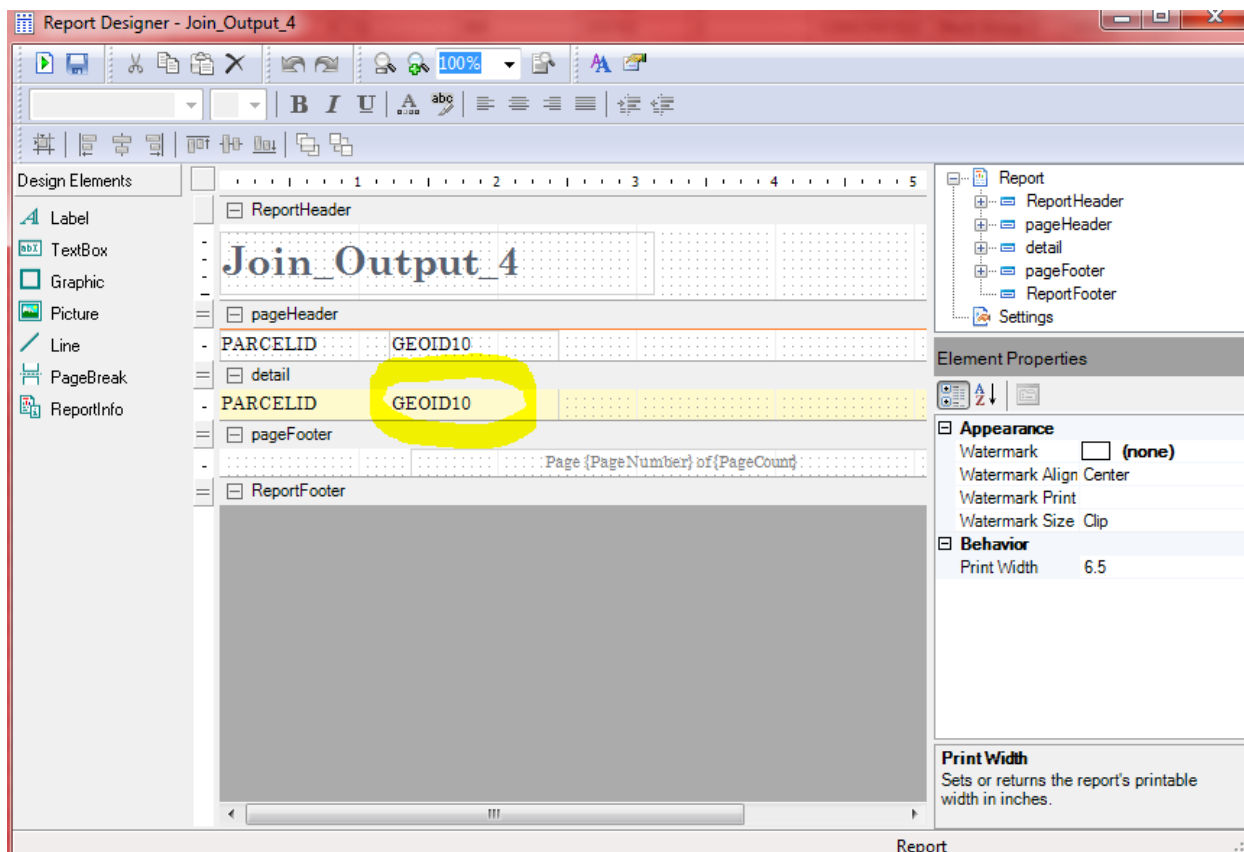
It will look something like this. Notice in this example the parcel ID is on two lines. Click Edit.



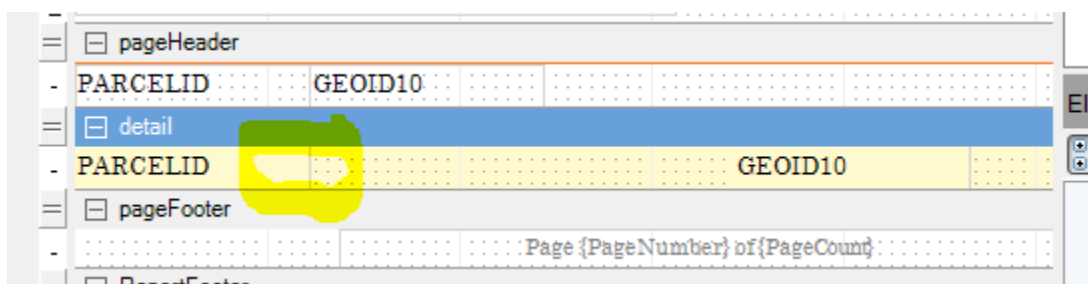
Creating 2010 Census Block Group Parcel Values With ArcMap 10.x For Tax Roll Submissions

Finally, we are going to modify the report to put the parcel ID on one line, eliminate page breaks, headers and footers before choosing the final output format.

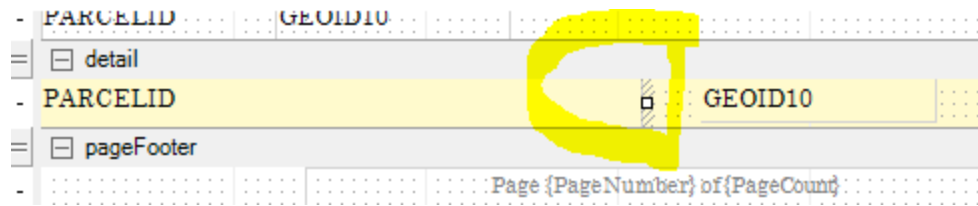
First, left-click GEOID10 as shown and drag it to the right.



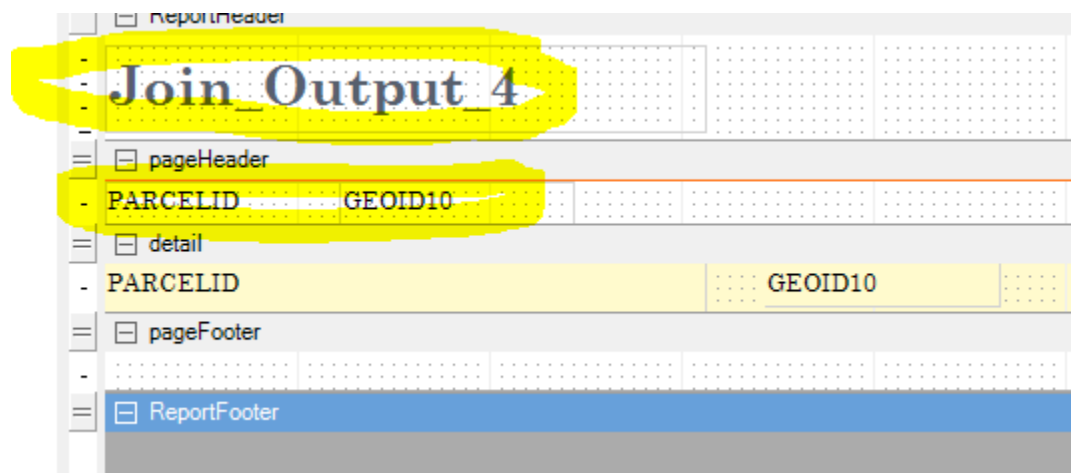
Next, hover the cursor over the separator between the PARCELID and the GEOID10 fields. Drag the separator to the right to expand the field.



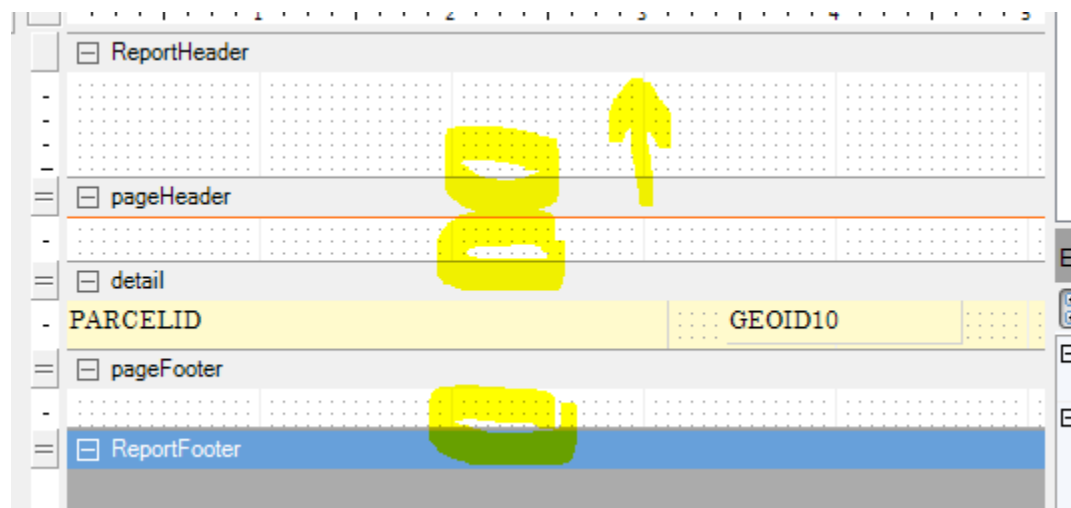
Creating 2010 Census Block Group Parcel Values With ArcMap 10.x For Tax Roll Submissions



Next, left click on “Page (Page Number) of (Page Count)” and delete. Also delete PARCELID, GEOID10 in the page header as well as the “Join_Output” title in the report header, as shown.

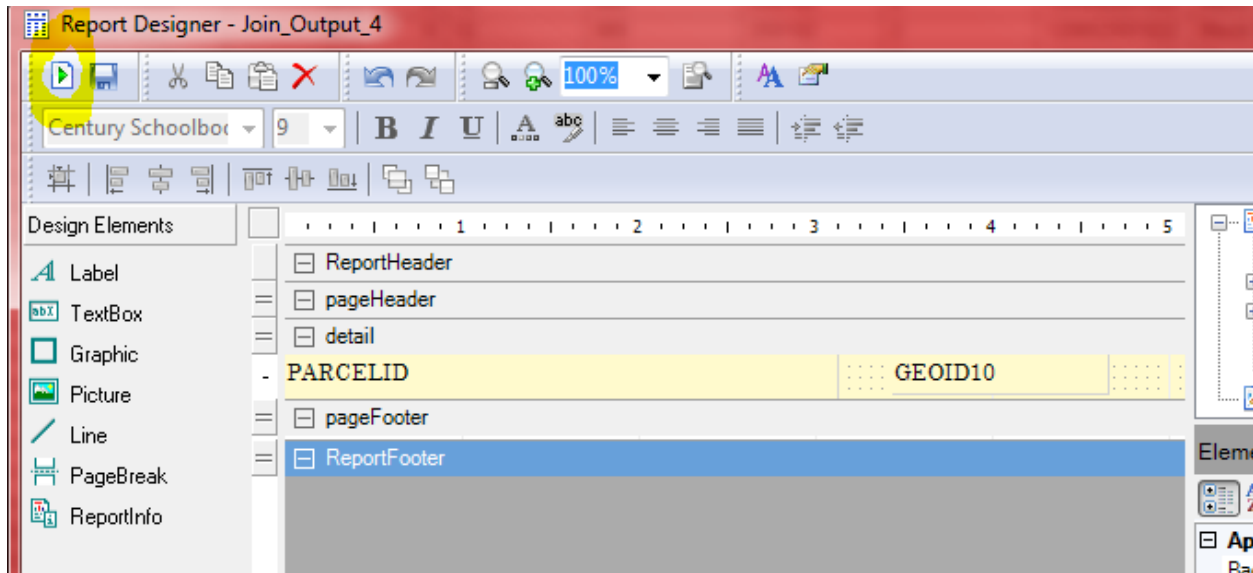


Hover the cursor at the bottom of the report header, the page header and the page footer areas to collapse those fields by dragging the separators up.

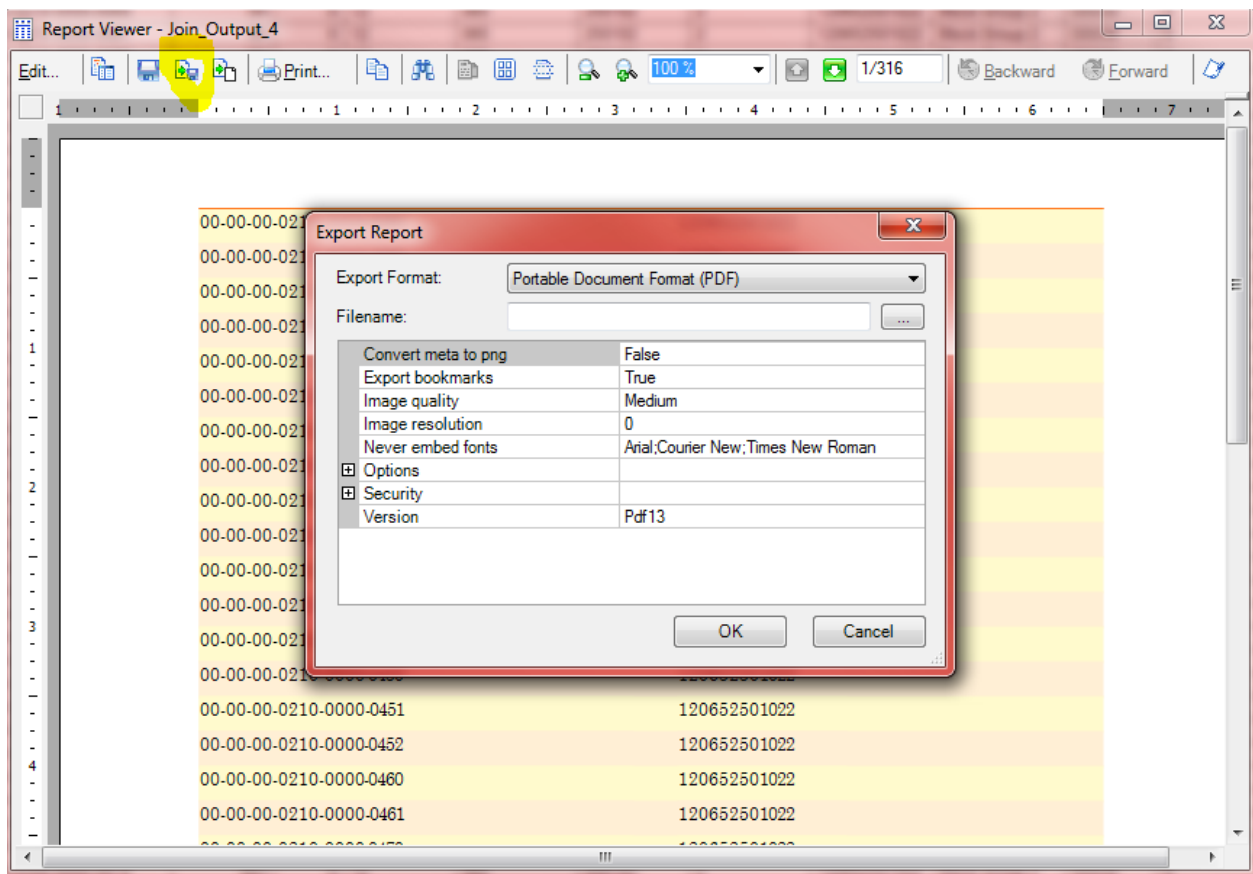


Creating 2010 Census Block Group Parcel Values With ArcMap 10.x For Tax Roll Submissions

When the fields are adjusted, click Run Report as shown circled:



Next click Export report to file as shown. This will open the Export Report dialog box. Typically, choose Text Format from the dropdown.



Creating 2010 Census Block Group Parcel Values With ArcMap 10.x For Tax Roll Submissions

In this example, Text delimiter is comma. Where highlighted, navigate to the desired folder, name the file and click OK. YOU ARE DONE!

